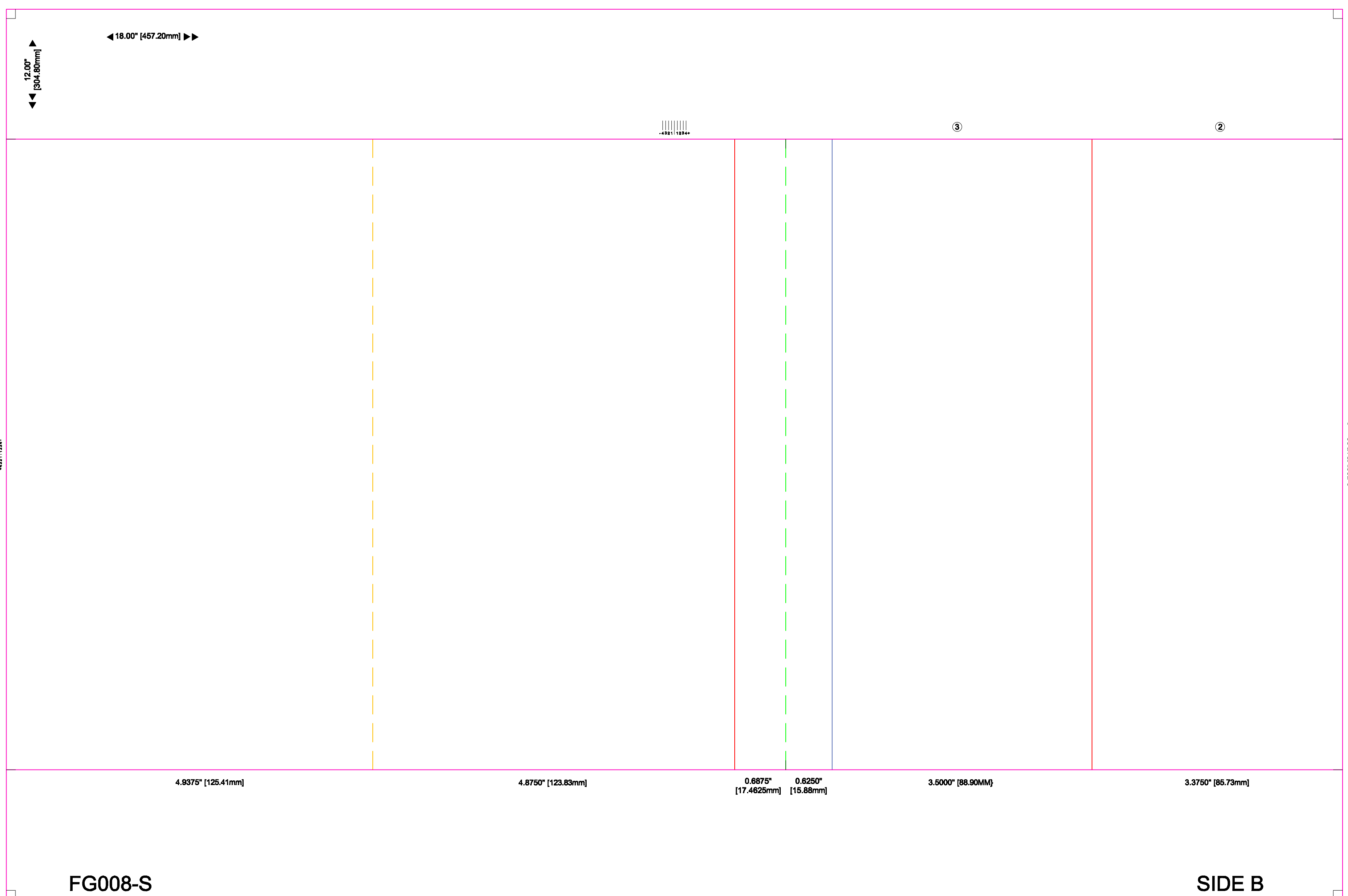
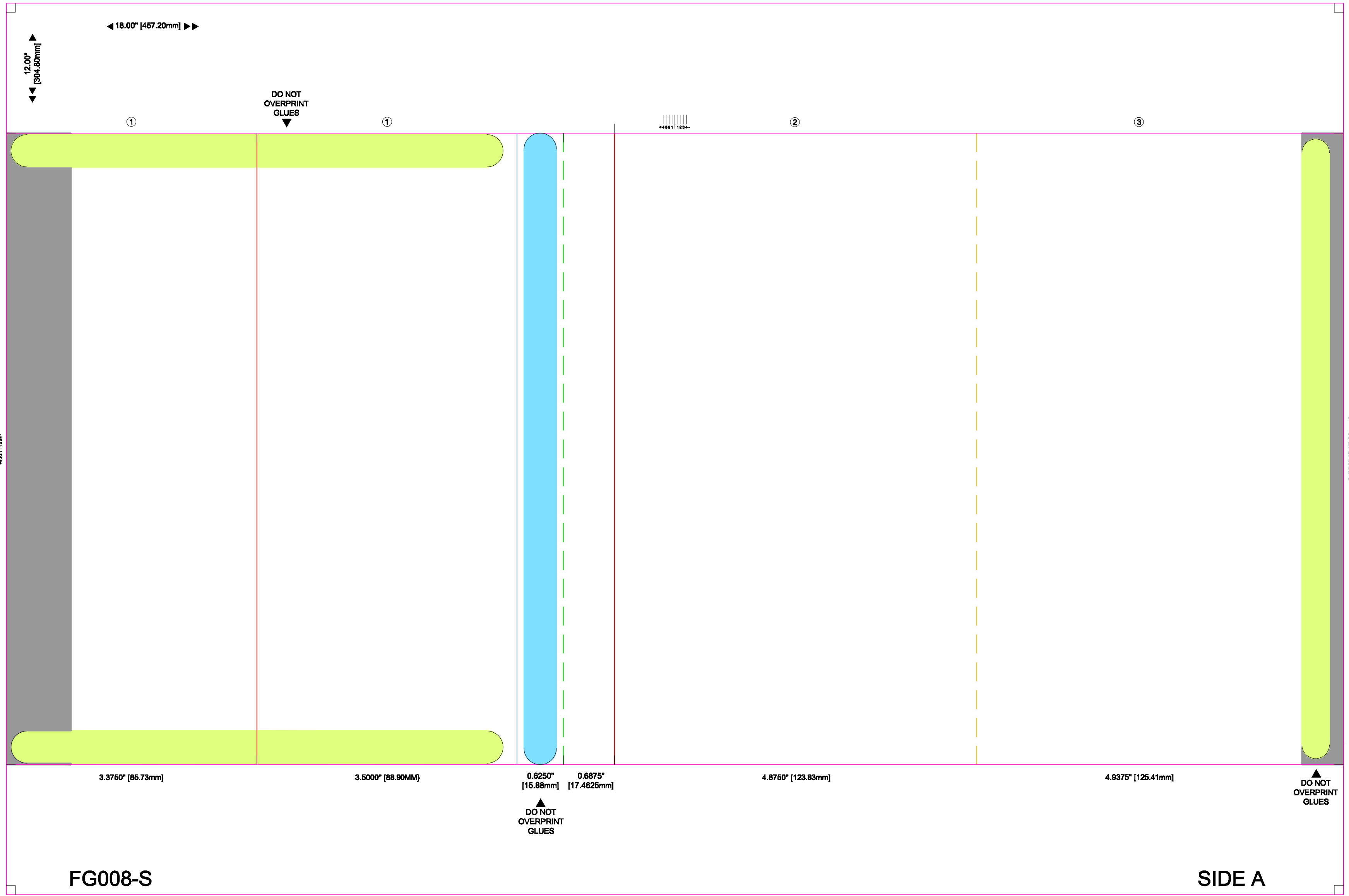


NEVER overprint with ink
or place any coating on
top of the **cohesive** or
remoist glue or where the
remoist will adhere

Note: When overprinting **perforations** on some digital presses a **perforation image** may transfer to other locations on subsequent sheets. **We recommend a non-printable area of 1/16th of an inch (1.6mm) on each side of the perforation.** We suggest you test this on your press, if you don't get the perforation image on subsequent sheets disregard 1/16th of an inch recommendation if desired.



CONVERTIBLE SOLUTIONS
 PATENT PENDING
 1-866-832-0217
 www.ConvertibleSolutions.com

LEGEND

- FOLD PERFS
- CUT SCORE
- FOLDS
- PERFS
- COHESIVE GLUE
- REMOIST GLUE
- NON-PRINTABLE AREA