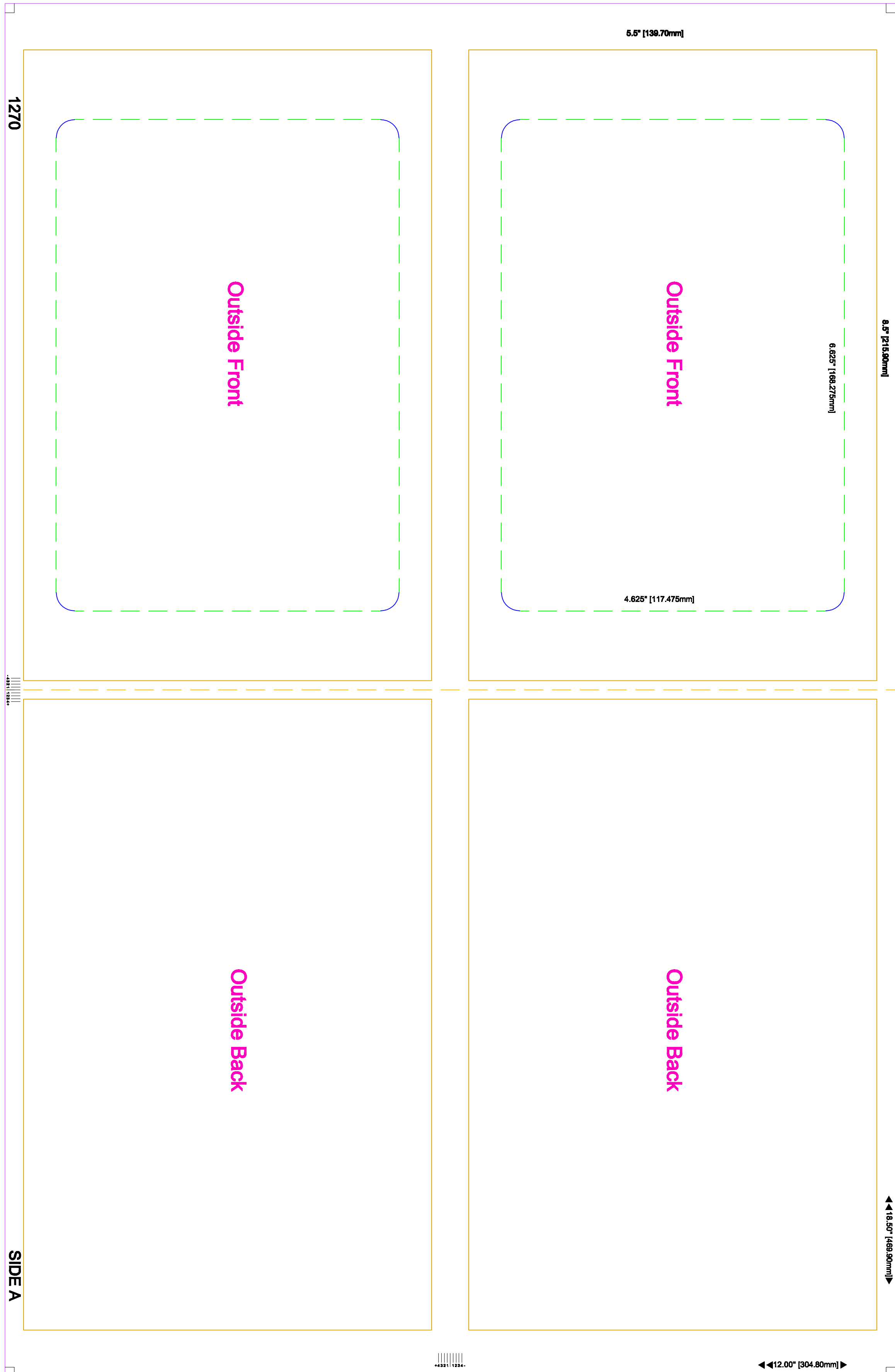
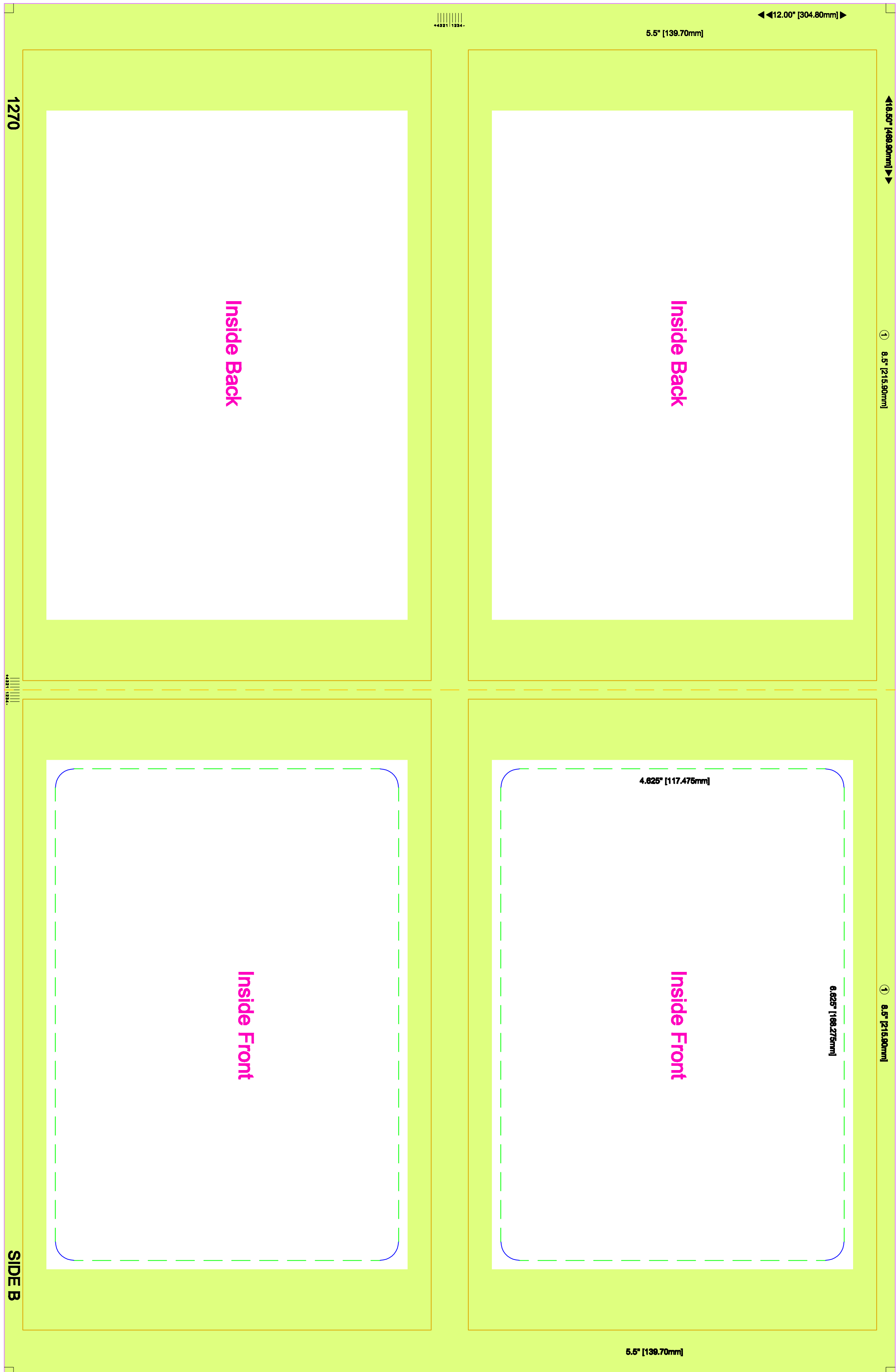



**NEVER overprint with ink**  
or place any coating on  
top of the **cohesive** or  
**remoist** glue or where the  
remoist will adhere

Note: When overprinting **perforations** on some digital presses a **perforation image** may transfer to other locations on subsequent sheets. **We recommend a non-printable area of 1/16th of an inch (1.6mm) on each side of the perforation.** We suggest you test this on your press, if you don't get the perforation image on subsequent sheets disregard 1/16th of an inch recommendation if desired.




**CONVERTIBLE SOLUTIONS**  
 PATENT PENDING  
 1-866-432-0217  
 info@convertiblesolutions.ca  
 www.convertiblesolutions.ca  
 LEGEND  
 TRIM LINES  
 PERF LINES  
 FOLD PERF LINE  
 CONVERSE GUE

